

WIFI VIDEO DOOR PHONE



1、 Introduction:

Wifi Video Door Phone is a doorbell with wifi connected camera .It can connect with wifi at home and achieved two-way intercom between door camera and cell phone . When Visitors press door bell ,door bell sounds and meanwhile camera will start to work and send real-time video and call to smart phone .

User receive the call and see the video who is outside ,and can intercom with visitors and remotely unlock door etc.

Wifi Video Door Phone have features such as alarm and motion detector,home security has more powerful barrier;

Advanced infrared light design make users can distinguish the visitors in the evening ; AC/DC power supply ,eliminates the headache of frequently battery replacement .

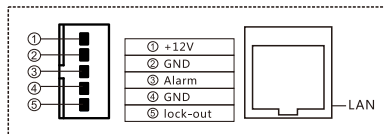
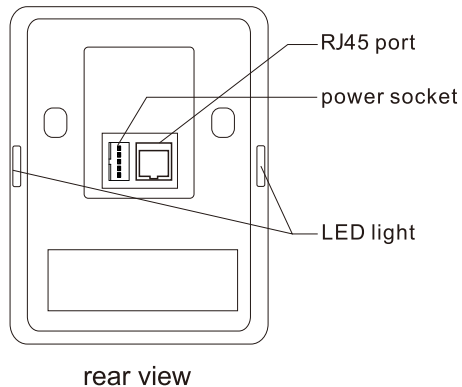
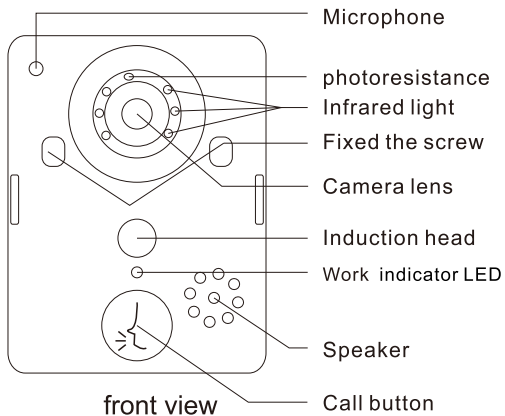
2. 4G wifi transmission systems,real-time video transmission,Audio and video data transmission up to 100M at most,Support Android OS .

One outdoor camera can support multiple cell phone ,make you see the outdoor at any time anywhere with wifi/3G/4G .

Pass CE,ROHS certification

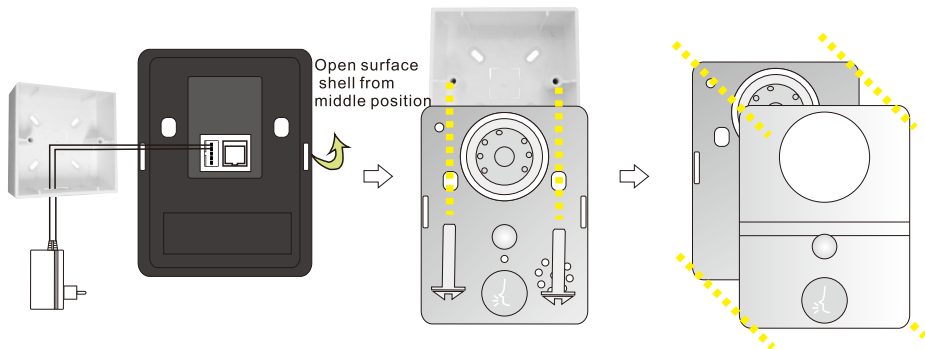
Thank you for your support on this product ,your satisfaction is our aim .

2、Port Definition



Rear connection diagram

3、 Installation Diagram



1. Switch top shell and four screws at bottom, forcibly opened the cover from middle position, connect with 12V/1A power cord

2. Fix the door camera with screws and 86box

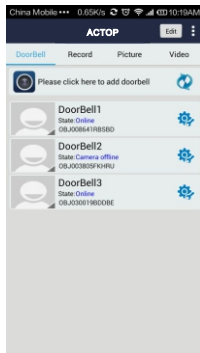
3. Cover up the cover , and plugged in , finished

4、 Basic operation and UI interface introduction of Mobile connects with Wifi Video Door Phone

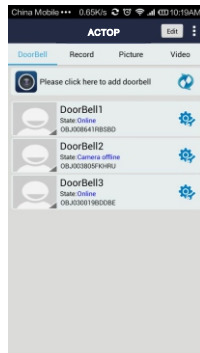
4.1、 Start Wifi door bell



1. Installed door bell software

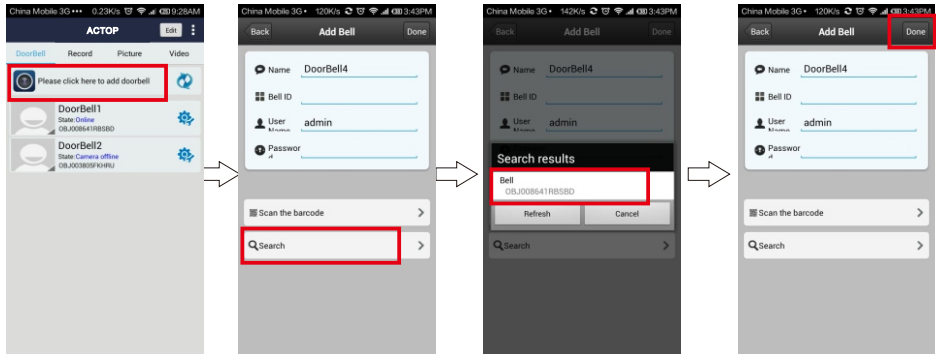


2. Display company logo, later entering the system main interface



3. Entered in main interface, as showed in the image above

4.2、 Add door bell



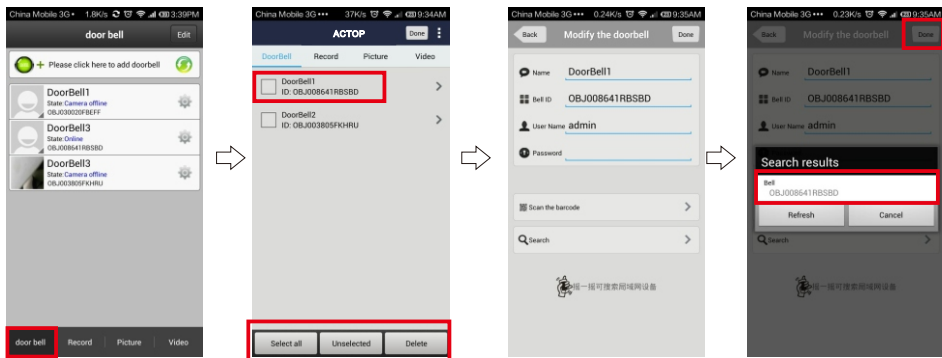
1.Click add door bell

2.can choose to manually input,QR code scanning,or LAN search to find the door bell and add it

3.When search over LAN, pls make sure mobile phone is the same LAN with door bell device,then select the target device,regular target device name is bell(pls observe the ID number)

4.When operation is complete, click "finish"

4.3、 Edit door bell device

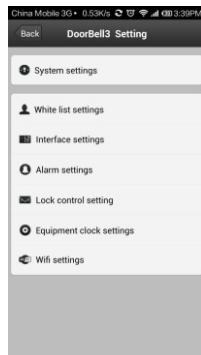
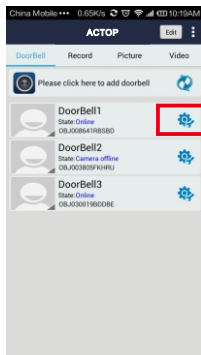


Navigate to the recording interface, can maintain installed door bells

2.If you need to remove a door bell device,select it and click "delete" button,and also support to bulk delete the selected devices

3.modify name,ID,login name and password,click "finish" at top after edited,or by means of scanning two-dimensional code,search LAN etc quickly complete edit

4.4、 Door bell Setting



1. Observe door bell is online. If offline, pls click "refresh" button to refresh, and still offline, pls check your network configuration. When the door bell is online, user can click "setting" on main interface to set device's parameter

2. Can set wifi network, clock, alarm, users and other system parameter on device setting main interface

4.4.1、 System Setting

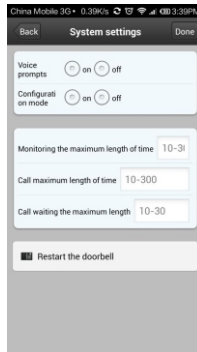
Voice prompt switch: When voice prompt is open, door bell device will turn on voice prompt. It is closed by default for factory setting

Configuration model switch: when configuration model is turned on, long pressing door bell button will make SoftAP configuration state, at this time led is flashing rapidly, accompanied by voice prompts. If turned off, this feature is blocked. The factory default is on, only administrator user has permission to do this

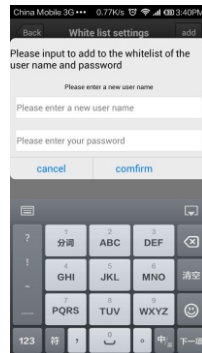
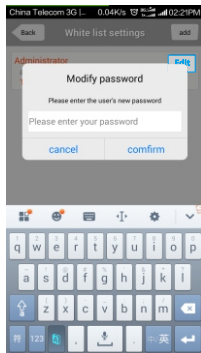
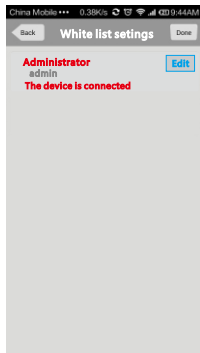
The maximum monitoring time :

The maximum intercom time:

The call waiting time:



4.4.2、User Management



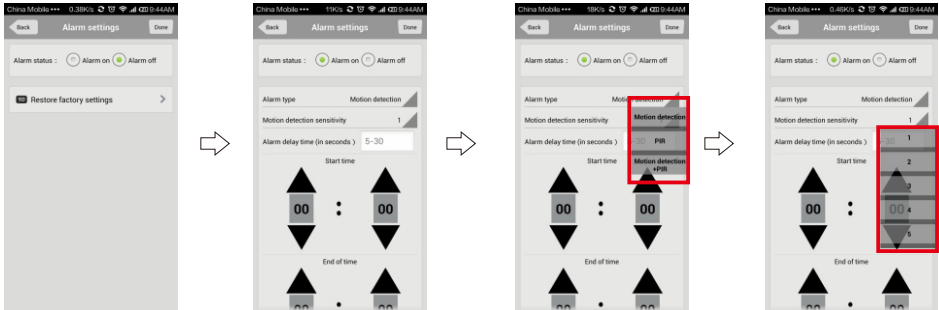
1.Administrator can add new users,and delete existing users.Normal user only have permission to modify their own password.Don't allow same user to login in different phone simultaneously

2.Modifying user's password

3.Adding a new user

4.4.3、 Alarm Settings

1. When alarm is off(disarm),any alarms are not notified to mobile phone
2. When alarm is on,user can further set the other parameters
 - a.Alarm type:motion detector,PIR and so on
 - b.Motion detector level:1-5
 - c.Alarm Delay
 - d.Alarm time effectively



4.4.4、 Clock settings

According to actual situation, set correct time zone. The unity of time for automatic calibration via internet

4.4.5、 Interface Settings

Used to define extended IO control, as well as the linkage function

4.4.6、 Lock control settings

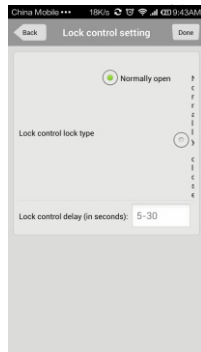
Definite connected electronic lock 's parameters



1.Clock settings

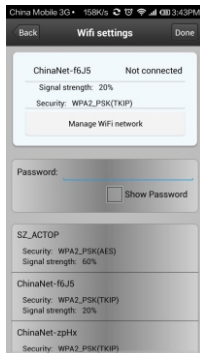
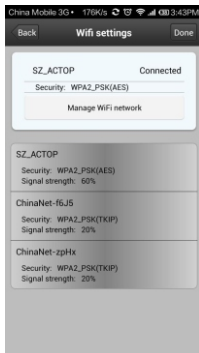


2.Interface Settings



3.Lock control settings

4.4.7、Wireless Network Settings

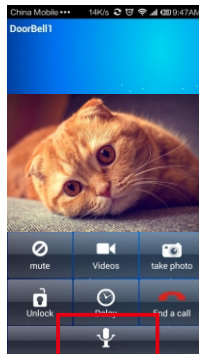
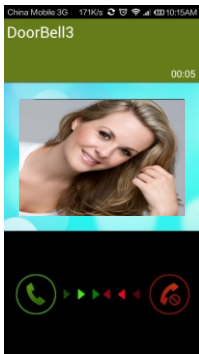


1. Select target door bell, click door bell setting, then click wifi setting, set wifi for door bell device, click wifi manager to set

2. Select target wifi in available wifi list

3. Input password, click finish to submit

4.5、 Intercom

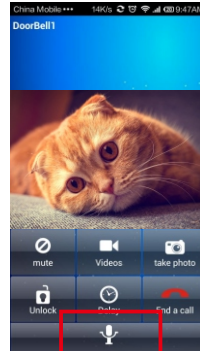
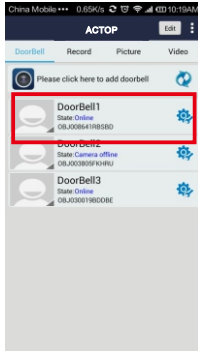


1. Visitors press the door bell

2. Slide right and left to answer and hand up

3. Any cell phone answer it, others mobile will automatically hand up. In the process of intercom, can support taking video, picture, and remotely unlock door. Press microphone on screen to send voice to doorbell. Delay button can extend the talk time. Ending a call can press "end call" button

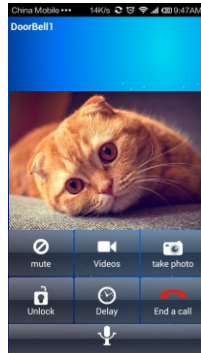
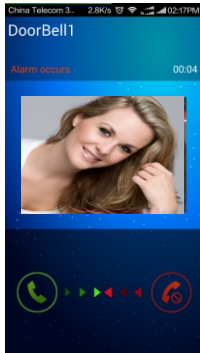
4.6、Proactive Monitor



1. In main interface, directly click the door bell device (online), user can proactively monitor

2. In monitor interface, User can take video, picture, but don't support remotely unlocking

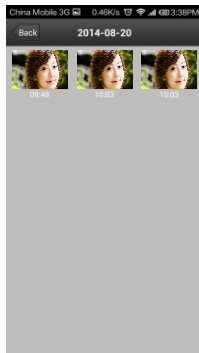
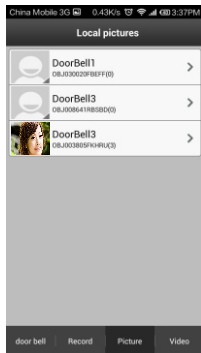
4.7、 Real-time alerts



1. When alarm occurs, all registered mobile phones will receive instant notification. Slide the green answer key, you can connect with the doorbell device and real-time monitor, slide the red hang up key to hang up.

2. Alarm monitoring

4.8、 Local pictures

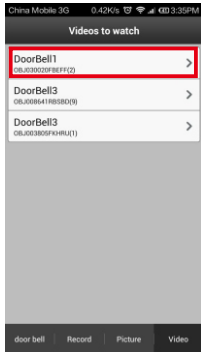


1. Select online door bell device

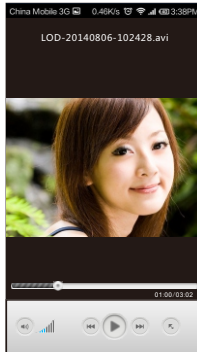
2. Group and sort by time

3. Click to see larger picture

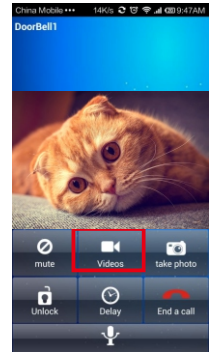
4.9、 Video playback



1.Navigate to video watching interface, select target device

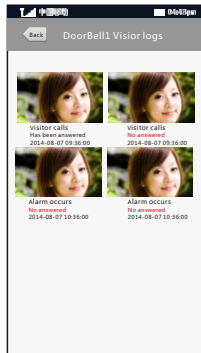
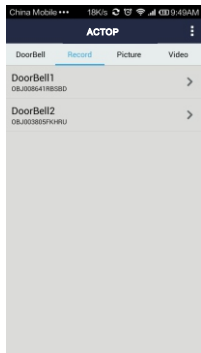


3.Video playback,use a video player installed in mobile phone for video playback,Storm Media Player is recommended



4.In process of intercomand monitor ,user can take videoes

4.10、Visitors/Alarm record

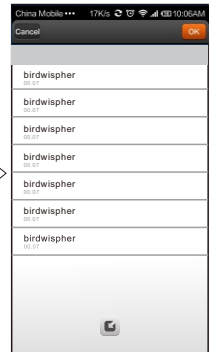
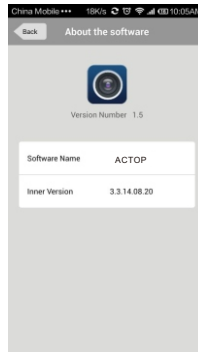
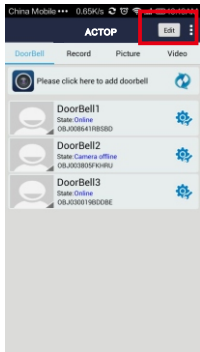


1.Navigate to record interface,select a target device , visitors call and alarm information are all saved

2.Overview

3.View the associated pictures

4.12、 System settings



1.Navigate to above interface,click "Modify"button , appears tone setting ,software version etc

2.Set door bell ringtone

3.View software version

4.Set alarm ringtone

5、 Specifications

Model	WIFI601
Camera	1/4"/F2.4/110°
Distinguishability	420 line
illumination	2 LUX
light source	6pcs Infrared light
Power	DC 12V 1A
Power dissipation	Wating:1.5W;Working:3.8W
Dimensions	120×96×34mm

6、 Components included:

- 1.Outdoor camera
- 2.Screws(standard)
- 3.User manual

【Notes】

- (1).Our Company is committed to reform and innovation, and reserves the right to make changes and improvements without further notice. Illustrations in this manual are for reference only.
- (2).All warranty and liability is void should you or your dealer open the unit without authorization or remove/deface the product labeling
- (3).Warranty: For one year from purchasing this product, we promise to provide you with free maintenance and technical support. This excludes damage during installation, unauthorized tampering and willful damage.
- (4).Warranty periods different from this cannot be support by the manufacturer.